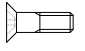

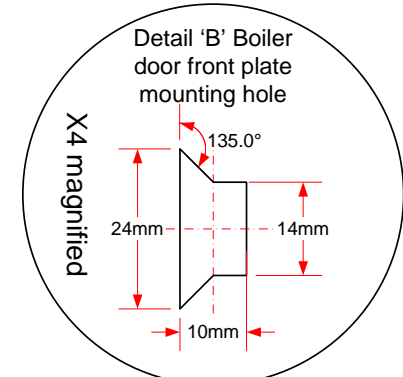
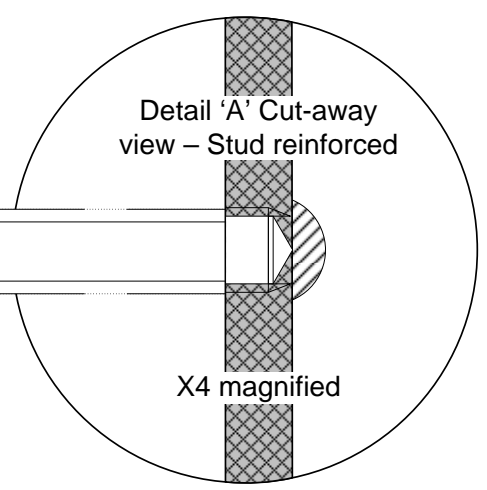
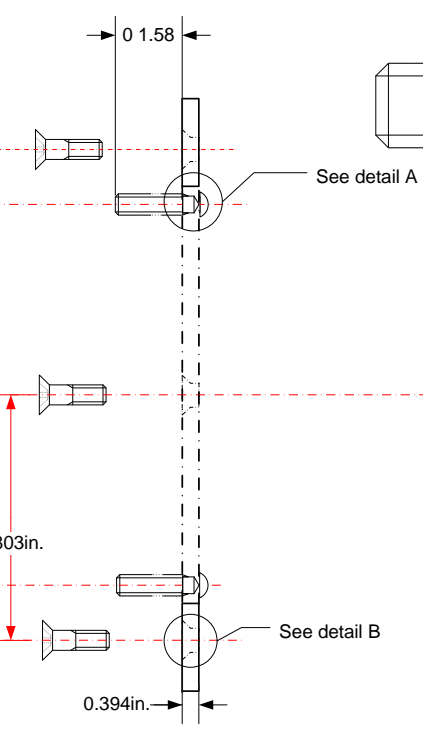

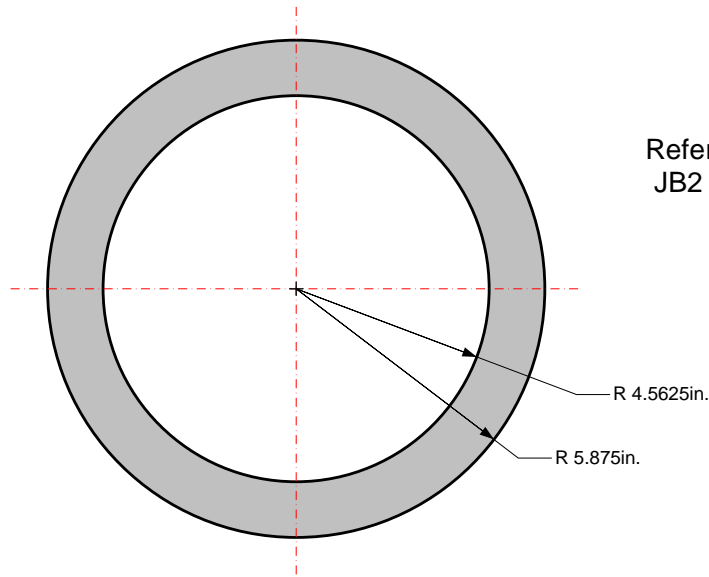


| | |
|---|---------------------|
|  | Supplied by FEB-DDT |
|  | Supplied by vendor |



- Vendor:
1. Supply octagon shaped flange according to drawing
 2. Drill and tap holes for burner mounting
 3. install studs [1/2" 13-NC studs x4]
 4. Reinforce studs at backing - by means of good engineering methods.
 5. Drill counter sunk hole for boiler front plate mounting to boiler door [x6]
 6. Do not finish - flange to be free of sharp edges or burrs
 7. Supply nuts, washer & locking washing for burner studs [x4]

| | | | | | | | | |
|----------------------|---|--|-----------|-------------|---|----------|--------------|-----------------|
| Drawing Template [0] |  | | Revisions | | OEM GT400A boiler door front plate for Webster JB2 burner | | | |
| | Flexible Eutectic Boilers Ltd. [North America] 1090 Fountain Street North, Unit 10 & 11 Cambridge, Ontario N3E 1A3 - Canada Tel: 1.800.943.6275 Fax: 519.650.1709 Website: www.dedietrich-boilers.com | | Date | Description | Initial | Creator | Tolerances ± | Material |
| | | | | | | Craig H. | 0.03" | CRS |
| | | | | | | Approved | Scale | File Name |
| | | | | | | Revision | 3" = 1 ft. | 2-400-WEB-001a |
| | | | | | | 0 | Units | Date [mm/dd/yy] |
| | | | | | | | Inches - mm | 04/18/07 |



Reference purposes – Webster
JB2 burner flange dimensions

R 4.5625in.

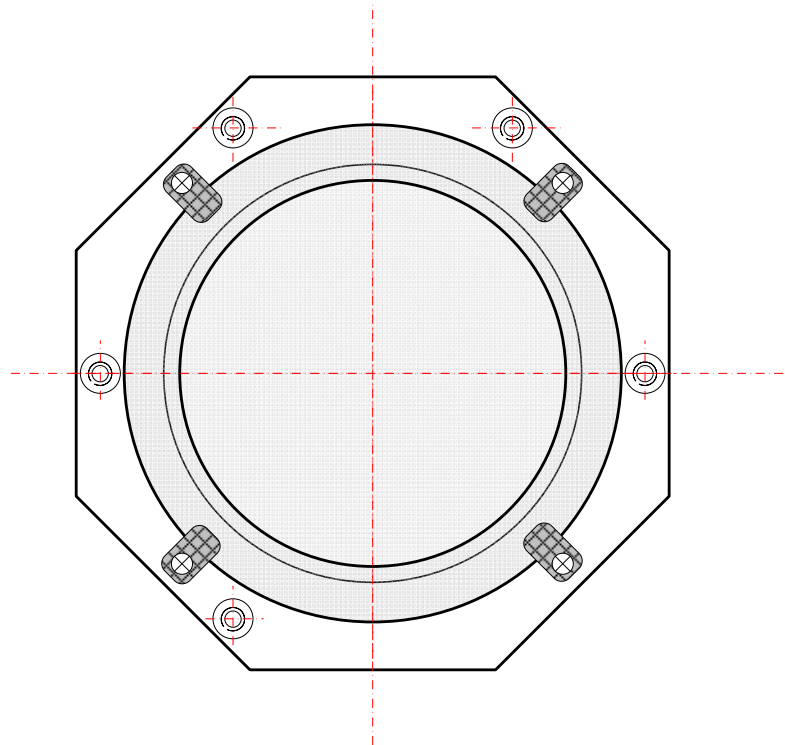
R 5.875in.

Drawing Template [0]



Flexible Eutectic Boilers Ltd. [North America]
1090 Fountain Street North, Unit 10 & 11
Cambridge, Ontario N3E 1A3 – Canada
Tel: 1.800.943.6275 Fax: 519.650.1709
Website: www.dedietrich-boilers.com

| Revisions | | | Description | | | | | |
|-----------|-------------|---------|---|----------|--------------|------------|-----------------|----------------|
| Date | Description | Initial | | | | | | |
| | | | Webster JB2 burner flange drawing according to Webster drawing # 810091 | | | | | |
| | | | Creator | Craig H. | Tolerances ± | 0.03" | Material | CRS |
| | | | Approved | | Scale | 3" = 1 ft. | File Name | 2-400-WEB-001b |
| | | | Revision | 0 | Units | inches | Date [mm/dd/yy] | 04/18/07 |



Final assembly drawing showing the Webster JB2 burner flange superimposed onto the GT 400 A boiler door front plate.

Burner supplied with flange clips as shown

Drawing Template [0]



Flexible Eutectic Boilers Ltd. [North America]
 1090 Fountain Street North, Unit 10 & 11
 Cambridge, Ontario N3E 1A3 – Canada
 Tel: 1.800.943.6275 Fax: 519.650.1709
 Website: www.dedietrich-boilers.com

| Revisions | | | Description | Final assembly drawing – JB2 Webster burner flange as applied to the OEM boiler front plate | | | | |
|-----------|-------------|---------|-------------|---|--------------|------------|-----------------|----------------|
| Date | Description | Initial | | Creator | Tolerances ± | Material | File Name | |
| | | | Creator | Craig H. | 0.03" | CRS | | |
| | | | Approved | | Scale | 3" = 1 ft. | | 2-400-WEB-001c |
| | | | Revision | 0 | Units | inches | Date [mm/dd/yy] | 04/18/07 |